

Kellyville Ridge

5 🛏 2 🚗 2 🚗

Manyel Mahlis and the team at Norwest Select Property Group are happy to offer to you this immaculate Clarendon built home that is situated within one of Kellyville Ridge's most desirable locations including the catchment to John Palmer Public School, The Ponds Shopping Centre and Stanhope Gardens Village.

Price : \$ 1,455,000
Building Size : 34 sqm
Land Size : 489 sqm
View : <https://www.norwestselect.com.au/sale/nsw/hills/kellyville-ridge/residential/house/6373063>

Listed below are just some of the luxurious inclusions:

- An oversized private formal lounge and dining upon entry
- Ultra modern gourmet kitchen with gas cooking, stainless steel appliances, dishwasher, quality stone benches and an abundance of cupboard space.
- Large open plan family meals/dining area off the kitchen which leads to the brilliant undercover alfresco area offering plenty of room to entertain guests
- An impressive sparkling salt water in ground pool with electric heating and large retractable awning so your family



Manyel Mahlis
0419440928



Matthew Carroll
02 9836 3881

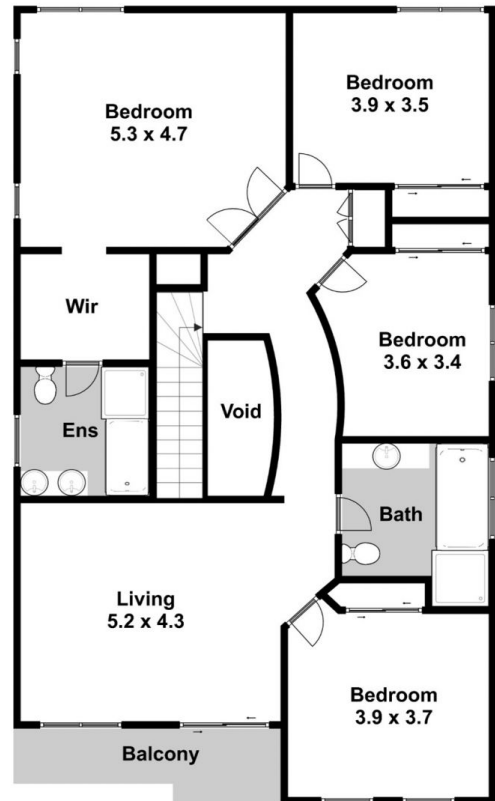
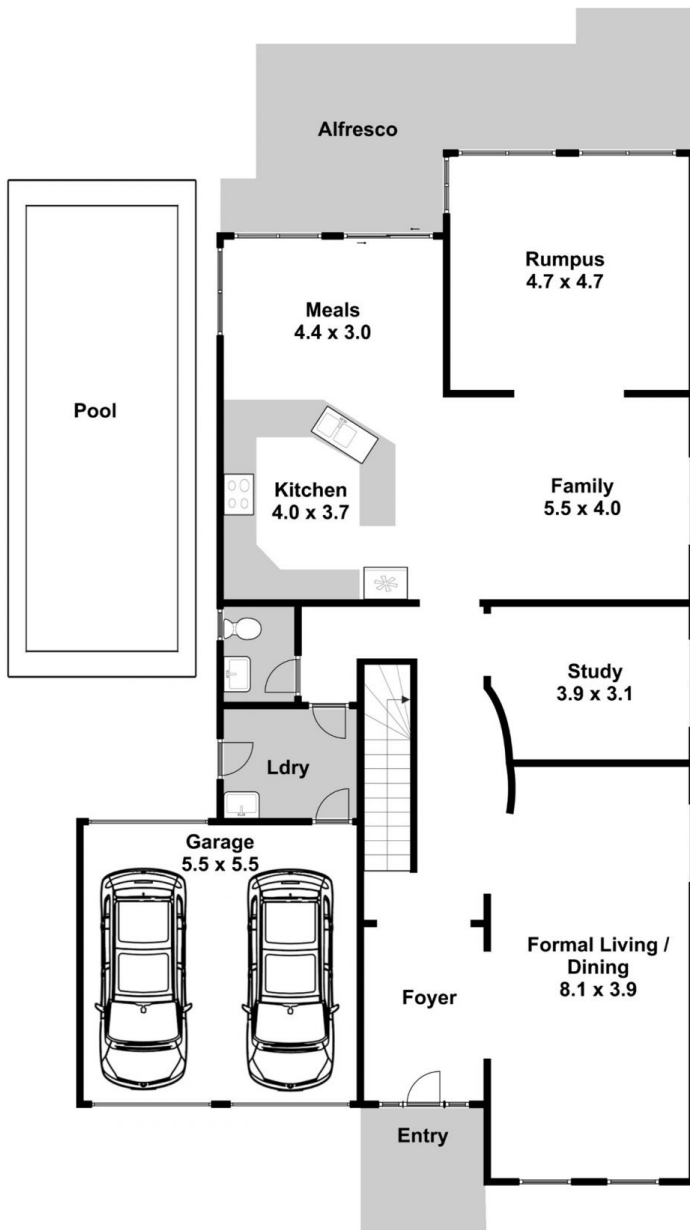
Kellyville Ridge

NORWEST SELECT
PROPERTY GROUP

1a/40 Panmure Street
ROUSE HILL NSW 2155

Please note:
Floorplan measurements are a guide only.
All dimensions are approximate in their distance and volume.

Rear



-  4
-  2
-  2

Front



Manyel Mahlis
manyel@norwestselect.com.au
0419440928



www.digital1.com.au